

# MONTHLY MEMBERSHIP PROGRESS REPORT

District 321B1

Results as of: 3/31/2026

GMT:

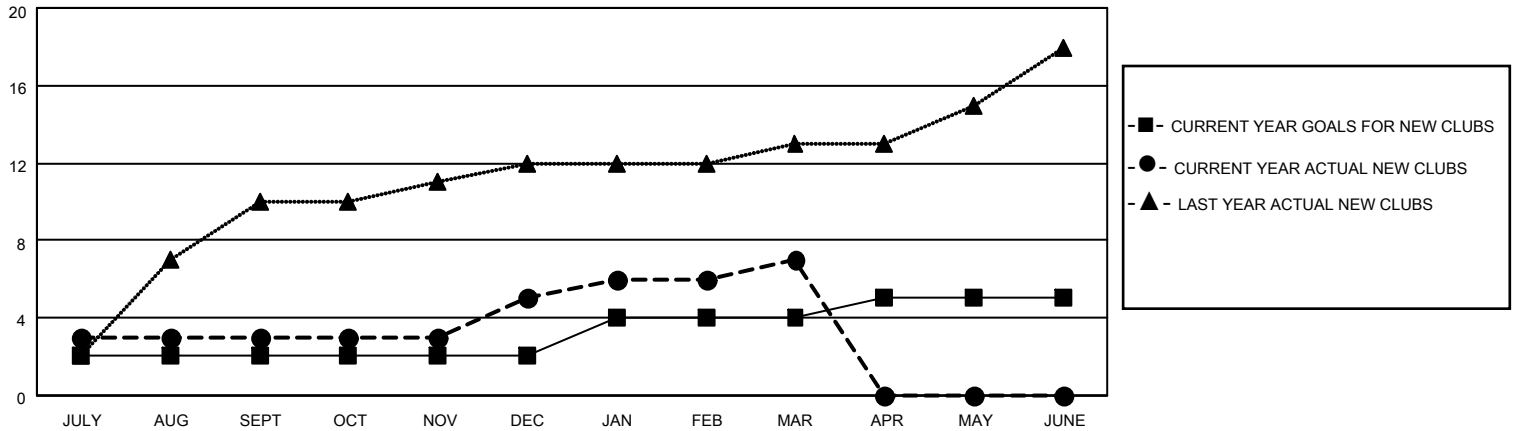
LOCATION INDIA

GMT CA

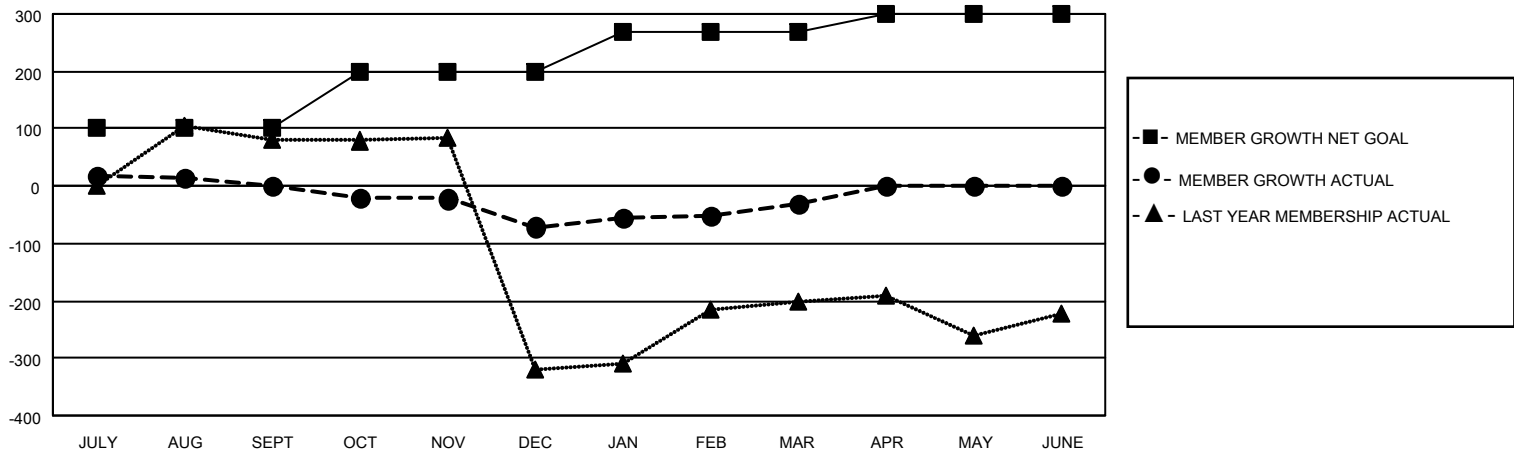
Clubs			
RESULTS FOR 2025-2026			
QUARTER	NEW CLUB GOAL	NEW CLUBS	DROPPED CLUBS
JULY/AUG/SEPT	2	3	1
OCT/NOV/DEC	0	2	3
JAN/FEB/MAR	2	2	1
APR/MAY/JUNE	1	0	0

Members			
RESULTS FOR 2025-2026			
QUARTER	MEMBER GROWTH NET GOAL	MEMBER GROWTH ACTUAL	DROPPED MEMBERS ACTUAL (including transfers)
JULY/AUG/SEPT	100	208	163
OCT/NOV/DEC	100	261	300
JAN/FEB/MAR	70	66	26
APR/MAY/JUNE	30	0	0

GOALS AND ACTUAL NEW CLUBS CUMULATIVE



GOALS AND ACTUAL MEMBERS CUMULATIVE



DROPPED CLUBS: 5

82 CLUBS OF 108 ADDED 1 OR MORE NEW MEMBERS

GENDER DISTRIBUTION

MALE 1,676 (60.72%)  
FEMALE 1,082 (39.20%)

DROPPED MEMBERS

[CLICK HERE FOR CUMULATIVE MEMBERSHIP DATA](#)

DECEASED	5
CLUB CANCELLED	156
OTHER	328
<b>TOTAL</b>	<b>489</b>

TOTAL FAMILY UNIT MEMBERS	904
FAMILY MEMBERS PAYING HALF DUES	490